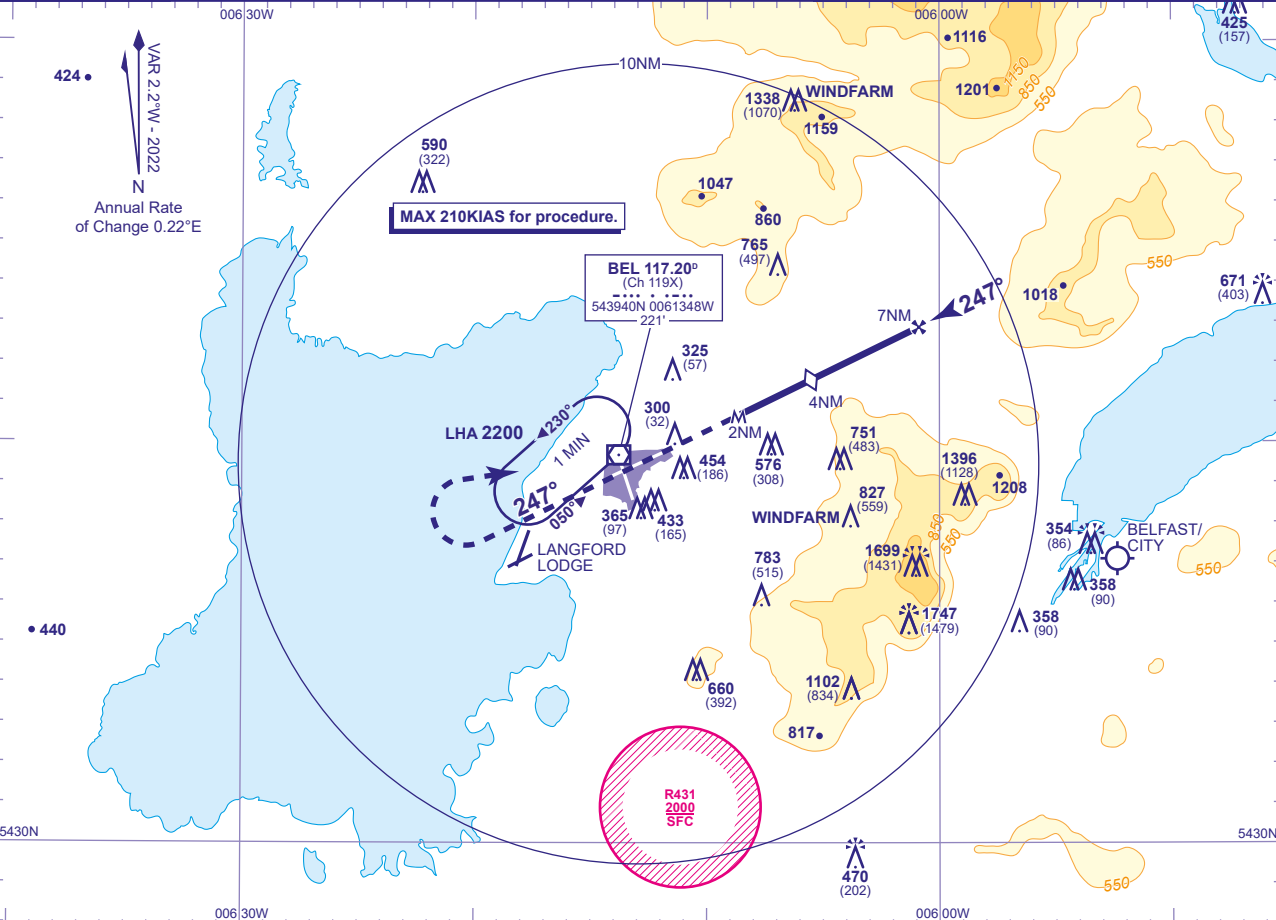


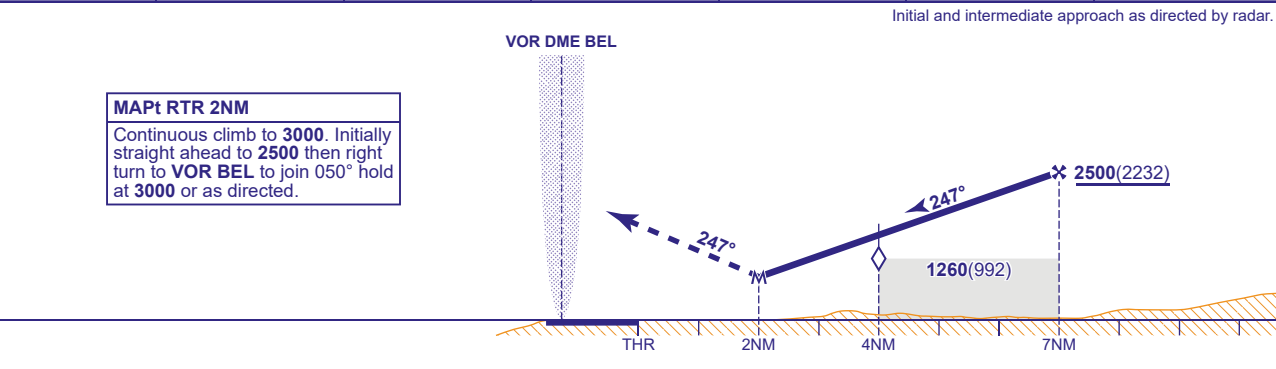
INSTRUMENT APPROACH CHART - ICAO

BELFAST ALDERGROVE SRA RTR 2NM RWY 25 (ACFT CAT A,B,C,D)

<div><div><div>33</div><div>30</div><div>090°</div><div>270°</div><div>34</div><div>35</div><div>180°</div><div>060°</div></div><div>MSA 25NM VOR BEL</div></div>	APP 133.125	ALDERGROVE APPROACH	AD ELEVATION 268	TRANSITION ALTITUDE 6000
	TWR 118.300	ALDERGROVE TOWER	THR ELEVATION 268	
	RAD 120.905	ALDERGROVE DIRECTOR	OBSTACLE ELEVATION 1747 AMSL (1479) (ABOVE THR)	
	ATIS 126.130	ALDERGROVE INFORMATION	BEARINGS ARE MAGNETIC	



RADAR ADVISORY HEIGHTS Gradient 5.25%, 319FT/NM						
NM	7.0	6.0	5.0	4.0 (SDF)	3.0	2.0
ALT(HGT)	2500(2232)	2180(1912)	1860(1592)	1540(1272)	1220(952)	910(642)



Aircraft Category		A	B	C	D	Rate of descent	G/S KT	160	140	120	100	80
OCA (OCH)	Procedure	910(642)	910(642)	910(642)	910(642)		FT/MIN	850	740	640	530	430
VM(C)OCA (OCH AAL)	Total Area	910(642)	910(642)	1180(912)	1290(1022)							

NOTE Aircraft will normally be required to hold not lower than 3000 at VOR BEL.